



Flat 15, Riverside Lofts 35-
36 St. Georges Quay,
Lancaster LA1 1RD

Flat 15, Riverside Lofts 35-36, St. Georges Quay, Lancaster

The property at a glance

2  2  1 

- Third Floor Apartment
- Open Plan Living Room & Kitchen
- Two Bedrooms
- Bathroom & Shower Room
- Balcony
- Tenure: Leasehold
- Property Banding: D
- EPC: D
- Picturesque Riverside Location

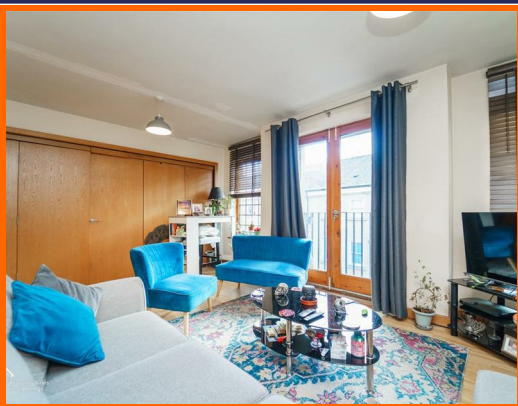


Get in touch today

01524 401402
info@gfproperty.co.uk
gfproperty.co.uk

£145,000

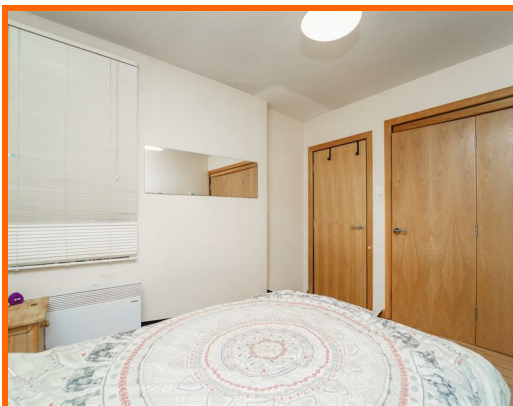
Get to know the property



Located in the picturesque St. Georges Quay, Lancaster, this charming third-floor apartment presents an excellent opportunity for both first-time buyers and savvy investors. The property features two well-proportioned bedrooms and two contemporary bathrooms, making it an ideal choice for professionals, couples, or small families.

Upon entering, you are greeted by an inviting open-plan living room and kitchen, designed to create a spacious and airy atmosphere. This layout not only enhances the flow of natural light but also provides a perfect setting for entertaining guests or enjoying quiet evenings at home. The kitchen is equipped with modern appliances, ensuring that culinary enthusiasts will feel right at home.

The property is conveniently situated, providing easy access to local amenities, shops, and transport links, making it a practical choice for those who wish to explore the vibrant city of Lancaster. With its combination of comfort, style, and a stunning location, this apartment is a rare find that promises a delightful living experience. Don't miss the opportunity to make this lovely property your new home.





Entrance Hall

Door into entrance hall, intercom, smoke alarm, doors to living/kitchen area, bedroom one, bedroom two, shower room and storage cupboard housing boiler.

Living Area

Open plan with kitchen/dining room, , two double glazed windows, electric radiator, smoke alarm, TV point, laminate flooring, folding door to bedroom two and double glazed double doors onto balcony.

Kitchen Area

Open plan with living area, mix of wall and base units with laminate worktops, oven with four ring electric hob, extractor fan, sink with mixer tap and draining board, tiled splashback, space for fridge/freezer and washing machine, laminate flooring and folding door to bedroom one.

Bedroom One

Glass block window, electric radiator, smoke alarm, doors to en suite, entrance hall and folding doors to kitchen/diner.

Bedroom Two

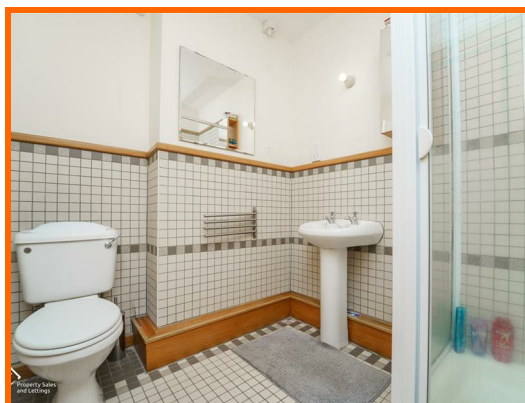
Double glazed window, integrated over head storage, double glazed door to balcony and door to en suite.

Shower Room

Low flush WC, pedestal wash basin with traditional taps, shower cubicle with electric shower, extractor fan, partially tiled surround, tiled flooring, doors to bedroom two and entrance hall.

Bathroom

Low flush WC, pedestal wash basin with traditional taps, panel bath with traditional taps, extractor fan, partially tiled surround and tiled flooring.





**Flat 15, Riverside Lofts
35-36 St. Georges Quay,
Lancaster, LA1 1RD**



**Flat 15, Riverside Lofts
35-36 St. Georges Quay,
Lancaster, LA1 1RD**

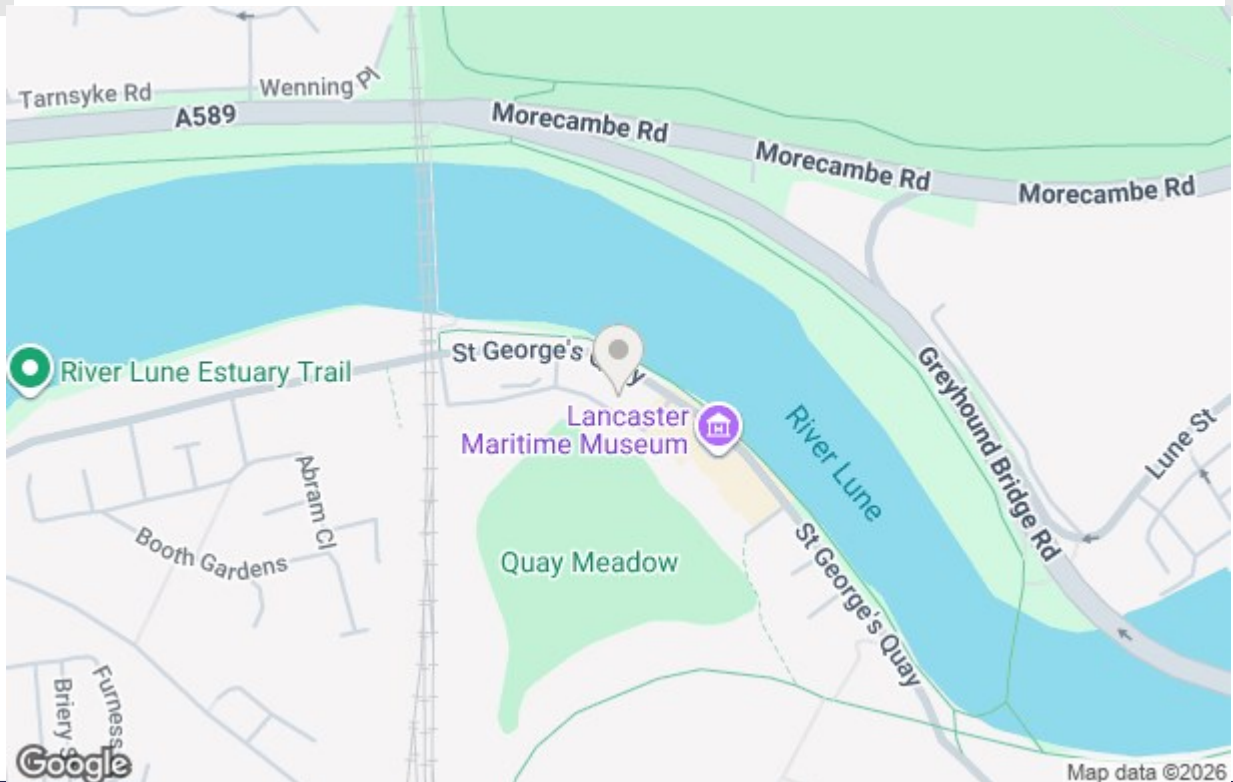
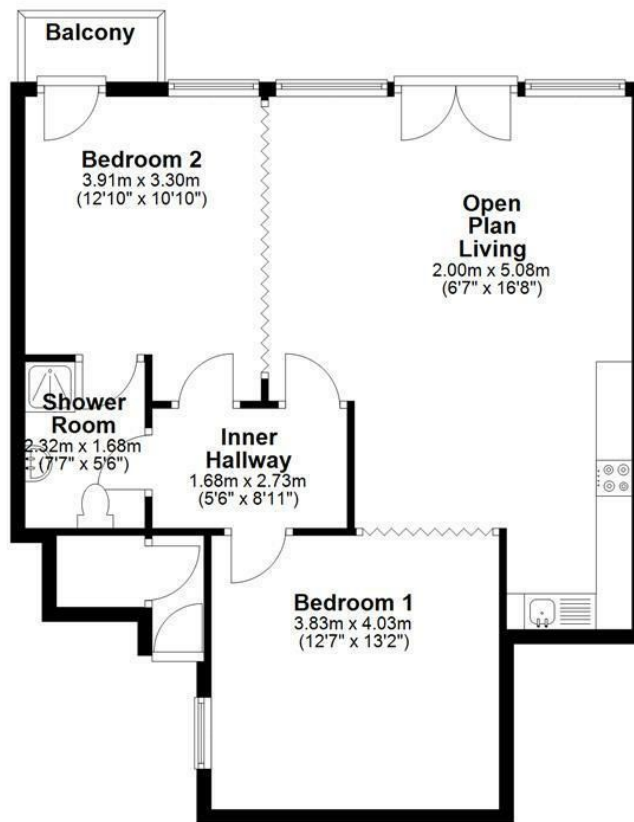


Get in touch today

01524 401402
info@gfproperty.co.uk
gfproperty.co.uk

Take a nosey round

Third Floor



Get in touch today

01524 401402
info@gfproperty.co.uk
gfproperty.co.uk

Energy Efficiency Rating	
Current	Potential
Very energy efficient - lower running costs	
(92 plus) A	
(81-91) B	
(65-80) C	
(55-64) D	
(39-54) E	
(21-38) F	
(1-20) G	
Not energy efficient - higher running costs	
65	76
England & Wales	
EU Directive 2002/91/EC	

Environmental Impact (CO ₂) Rating	
Current	Potential
Very environmentally friendly - lower CO ₂ emissions	
(92 plus) A	
(81-91) B	
(65-80) C	
(55-64) D	
(39-54) E	
(21-38) F	
(1-20) G	
Not environmentally friendly - higher CO ₂ emissions	
England & Wales	
EU Directive 2002/91/EC	